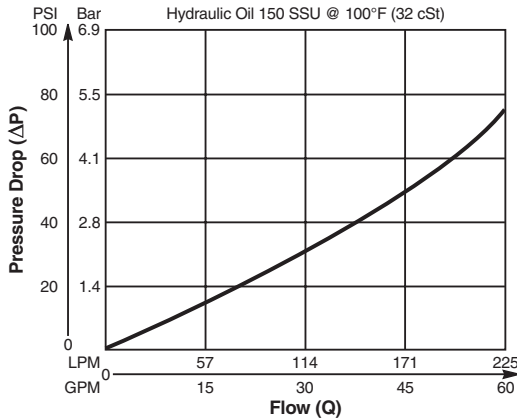


Valve/Cavity Compatibility

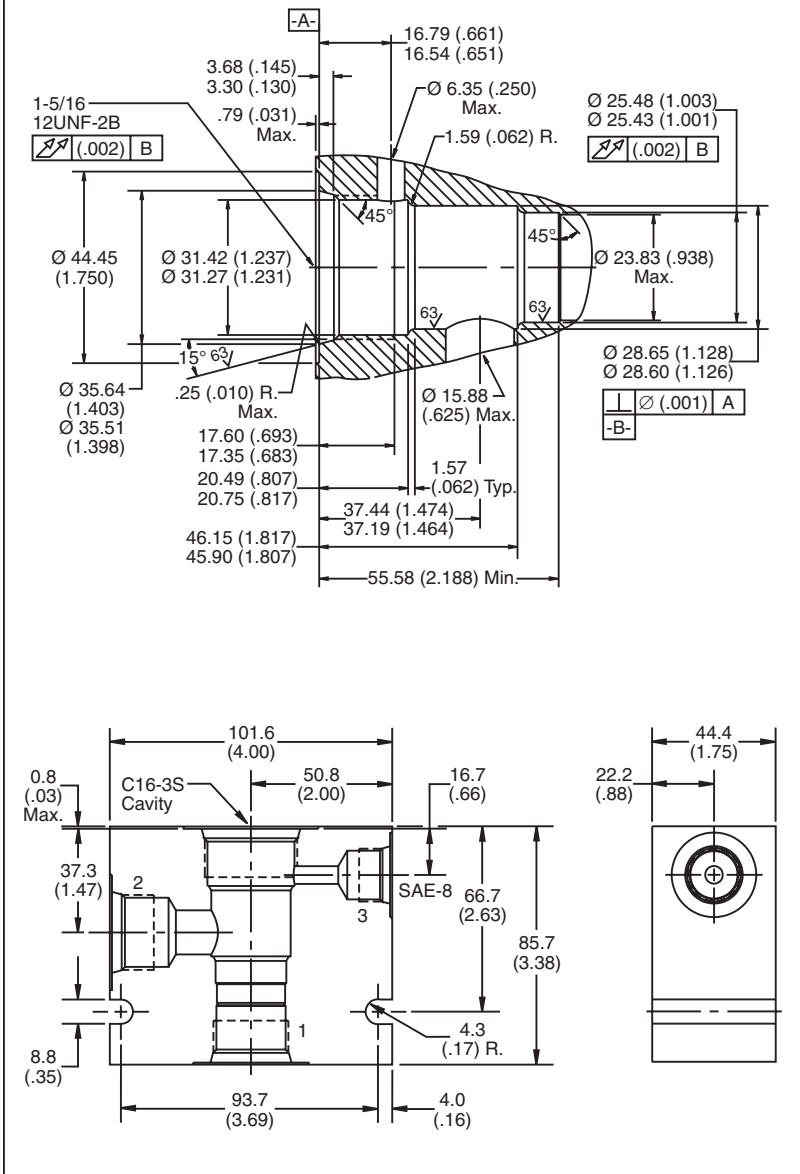
For additional information see Technical Tips on pages BC1-BC2.

		VALVE				
		Winner's Circle	Parker	Waterman	FPS	CEC
CAVITY	Winner's Circle	X	X	X	X	X
	Parker	X	X	X	X	X
	Waterman	X	X	X	X	X
	FPS	X	X	X	X	X
	CEC	X	X	X	X	X

Performance Curve
Pressure Drop vs. Flow



Dimensions Millimeters (Inches)



Ordering Information

B16 — **3S** —

16 Size 3-Way Short Cavity Body Material Port Size

Code	Body Material
Omit	Steel
A	Aluminum

Code	Port Size
16T	SAE - 16

Form Tool: Rougher NFT16S-3R
 Finisher NFT16S-3F
Weight: 2.4 kg (5.4 lbs.)

**Please be advised that this is a non-core line body.
 Additional lead-time and/or pricing requirements may exist when ordering.*

- CV**
- Check Valves
- SH**
- Shuttle Valves
- LM**
- Load/Motor Controls
- FC**
- Flow Controls
- PC**
- Pressure Controls
- LE**
- Logic Elements
- DC**
- Directional Controls
- MV**
- Manual Valves
- SV**
- Solenoid Valves
- PV**
- Proportional Valves
- CE**
- Coils & Electronics
- CB**
- Carpak Bodies
- BC**
- Bodies & Cavities
- TD**
- Technical Data